

1. Table of Contents (This Page)  
Created on Wed Oct 29 13:27:38 2014

2. component

3. solder

4. outline

5. plated-drill

6. componentmask

7. soldermask

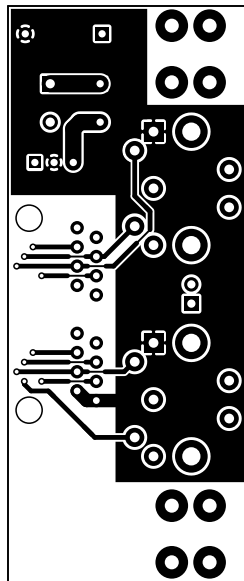
8. topsilk

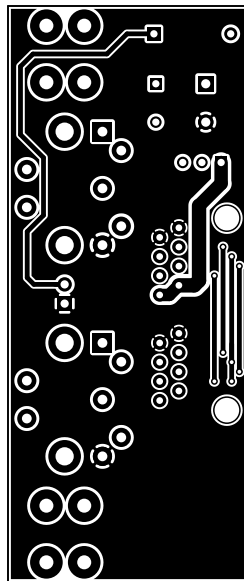
9. bottomsilk

10. topassembly

11. bottomassembly

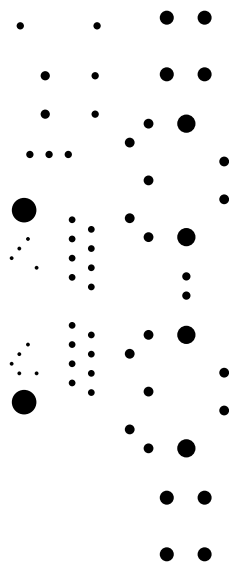
12. fab

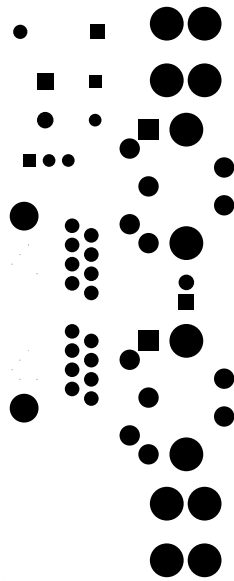


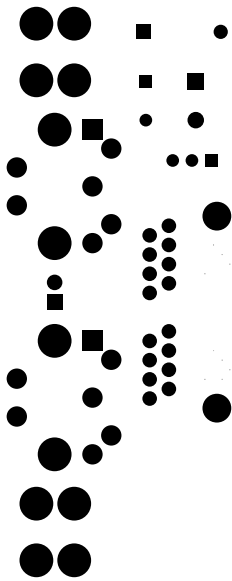


bottom (mirrored), scale = 1:1.000  
ckt-dccpanel.pcb



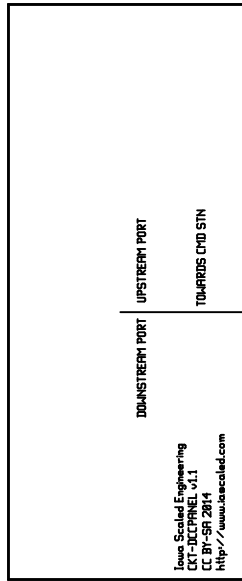


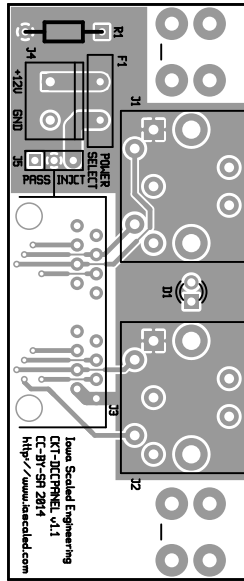


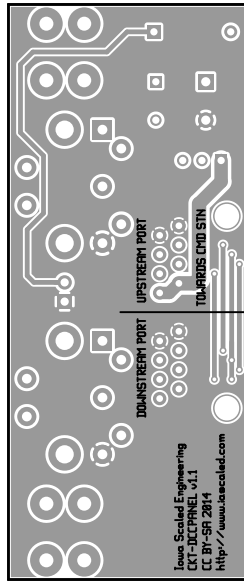








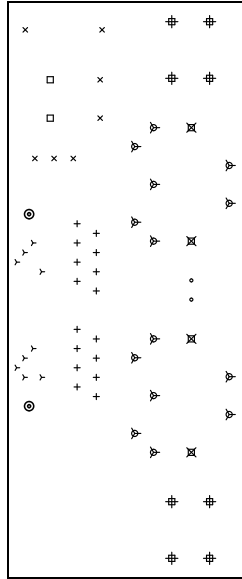




There are 9 different drill sizes used in this layout, 64 holes total

Symbol	Diem. (Inch)	Count	Plated?
y	0.020	9	YES
+	0.035	16	YES
x	0.038	7	YES
o	0.043	2	YES
□	0.048	2	YES
∇	0.051	14	YES
#	0.073	8	YES
⊗	0.095	4	YES
⊙	0.128	2	YES

Title: (unknown) - Fabrication Drawing  
 Author: Nathan D. Holmes  
 Date: Wed 29 Oct 2014 07:27:39 PM GMT UTC



Board outline is the center-line of this path