

# 1. Table of Contents (This Page)

Created on Wed Nov 12 20:16:09 2014

2. component

3. solder

4. outline

5. plated-drill

6. componentmask

7. soldermask

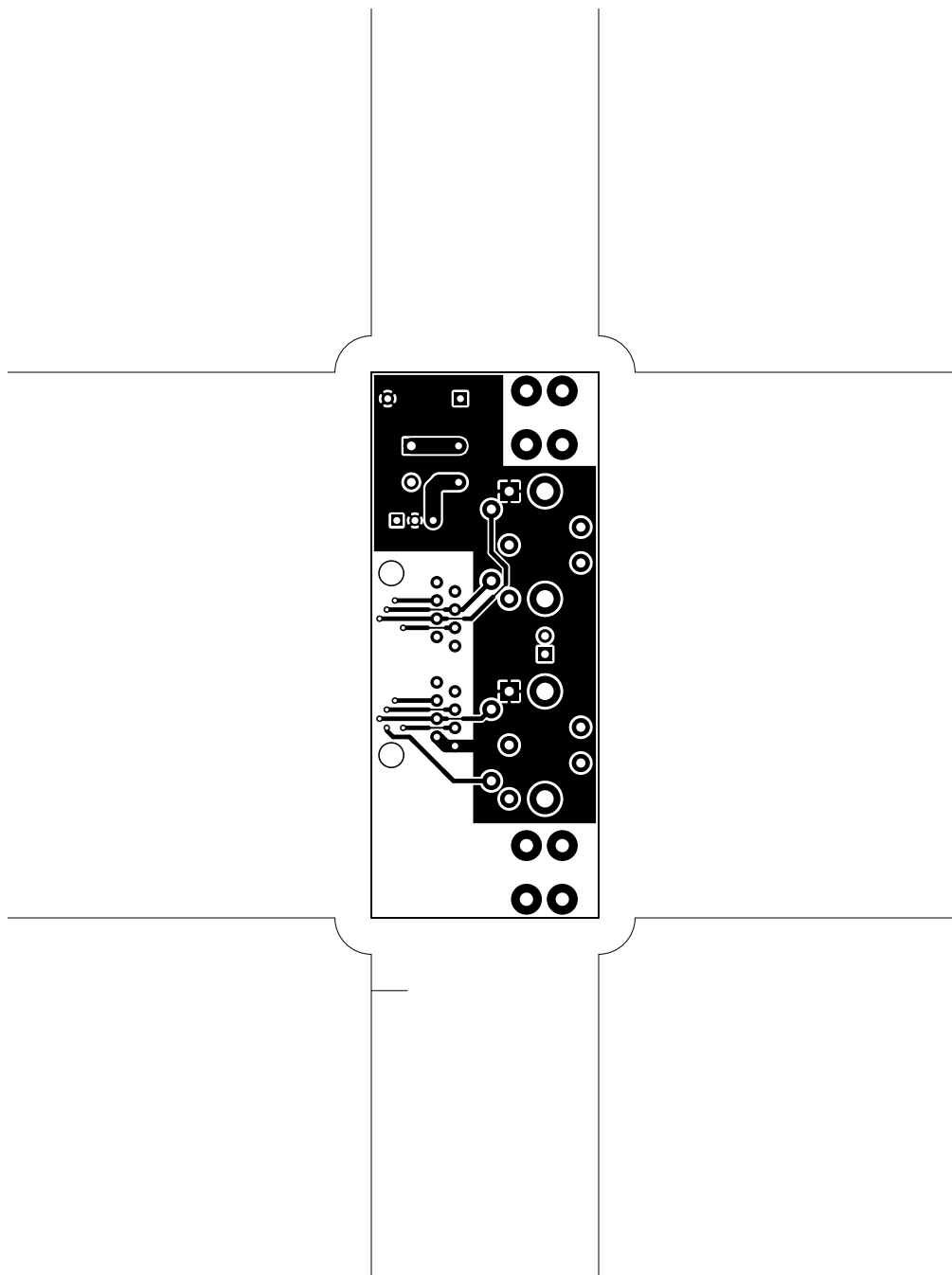
8. topsilk

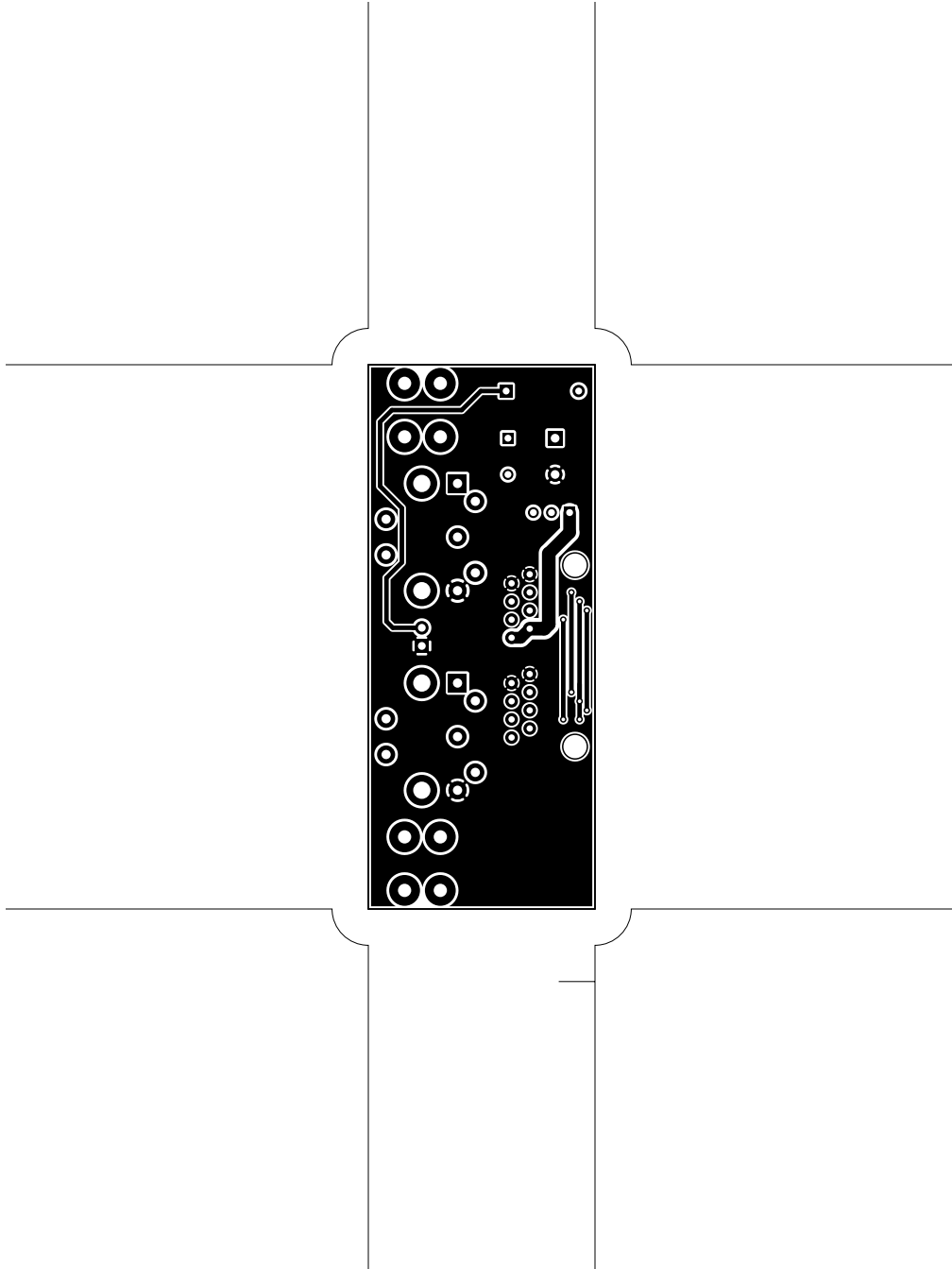
9. bottomsilk

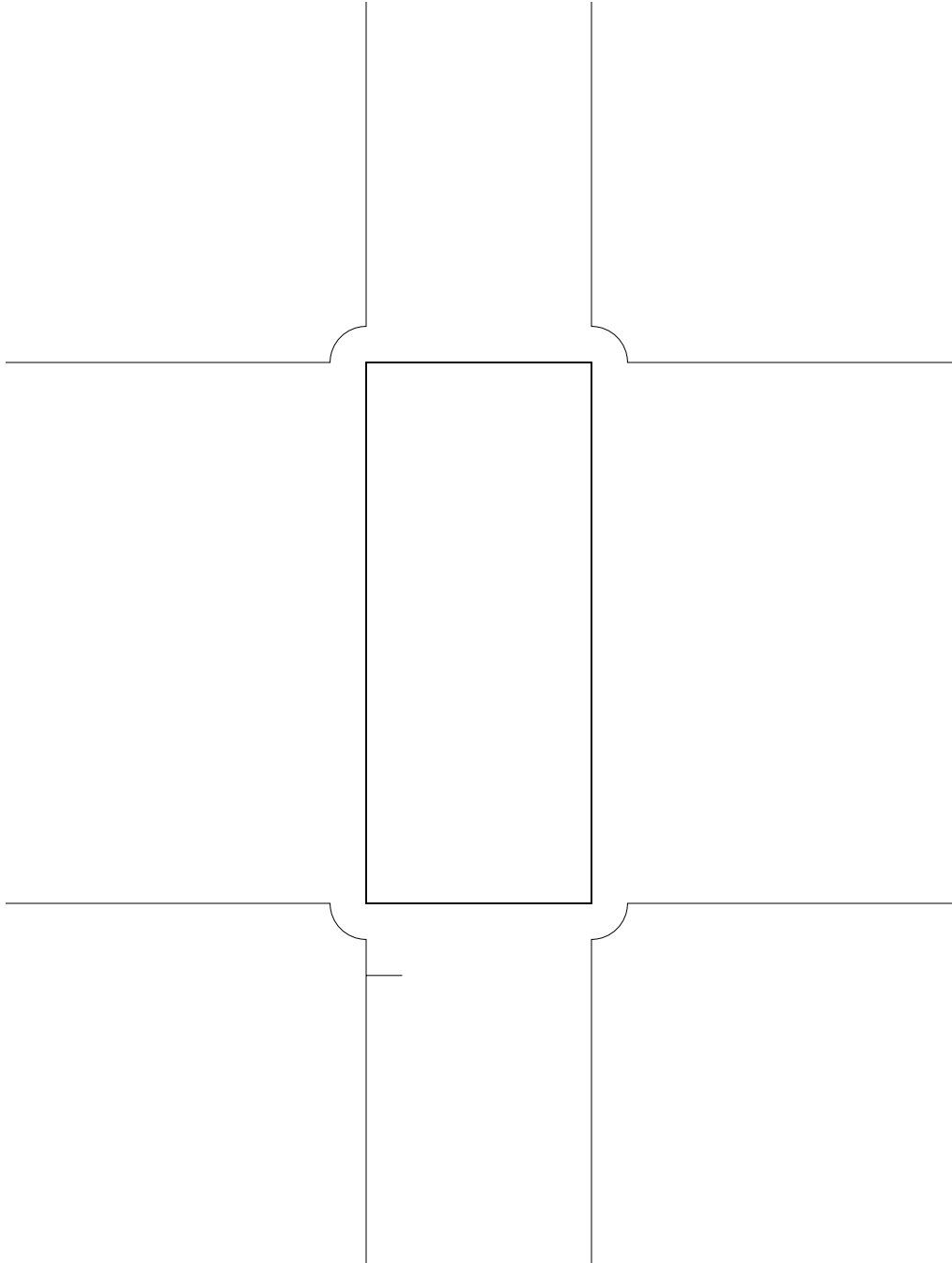
10. topassembly

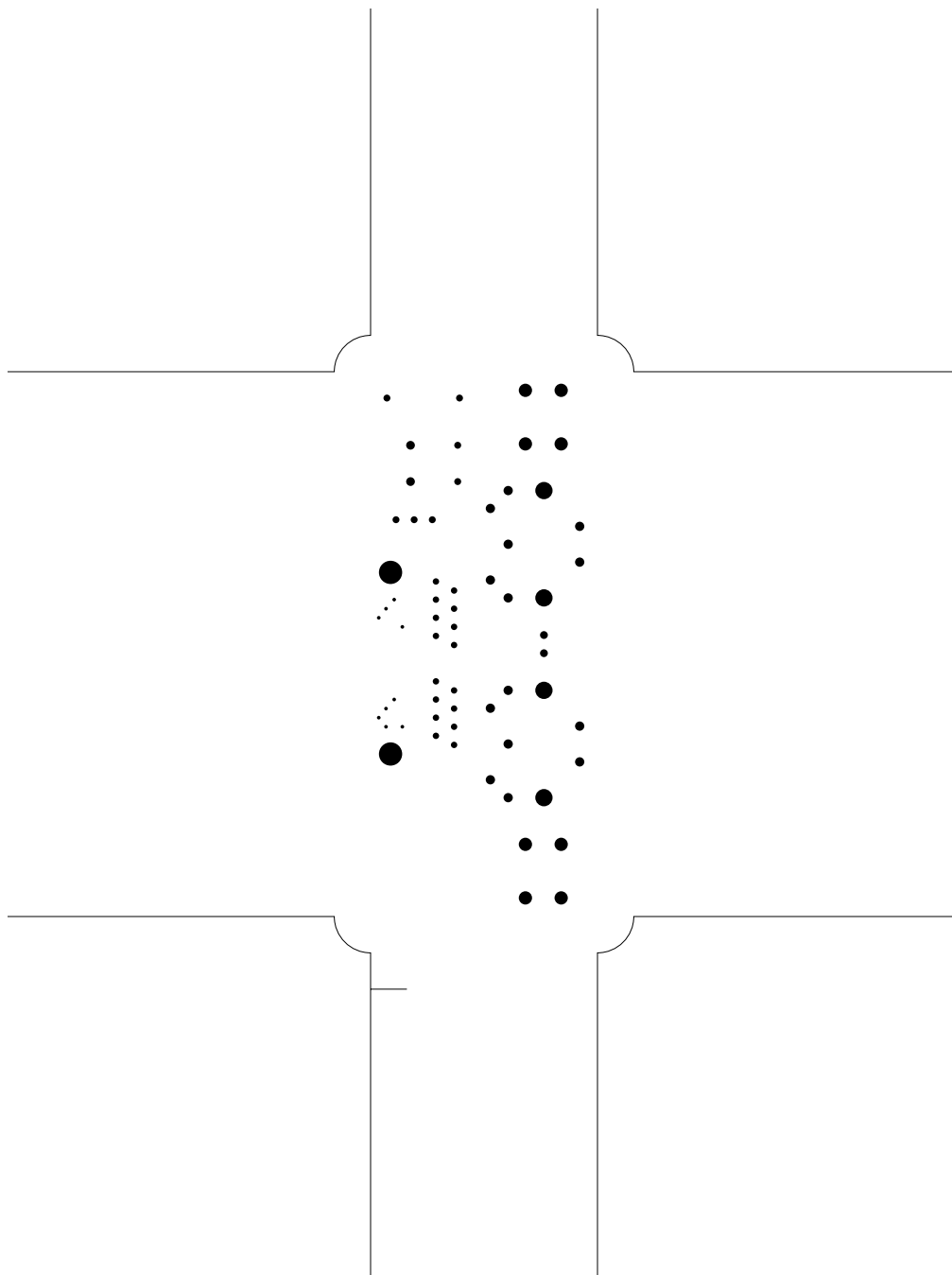
11. bottomassembly

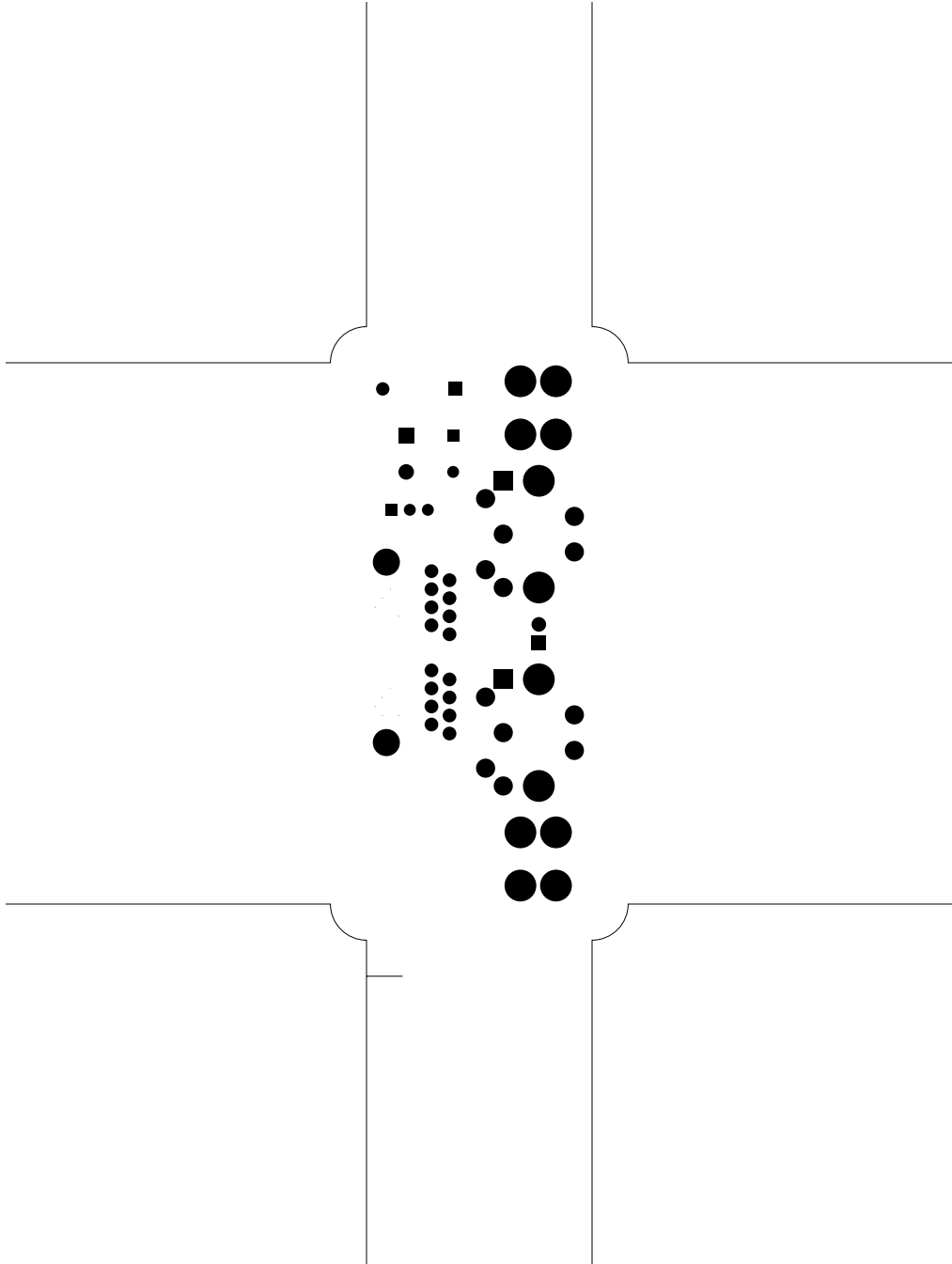
12. fab

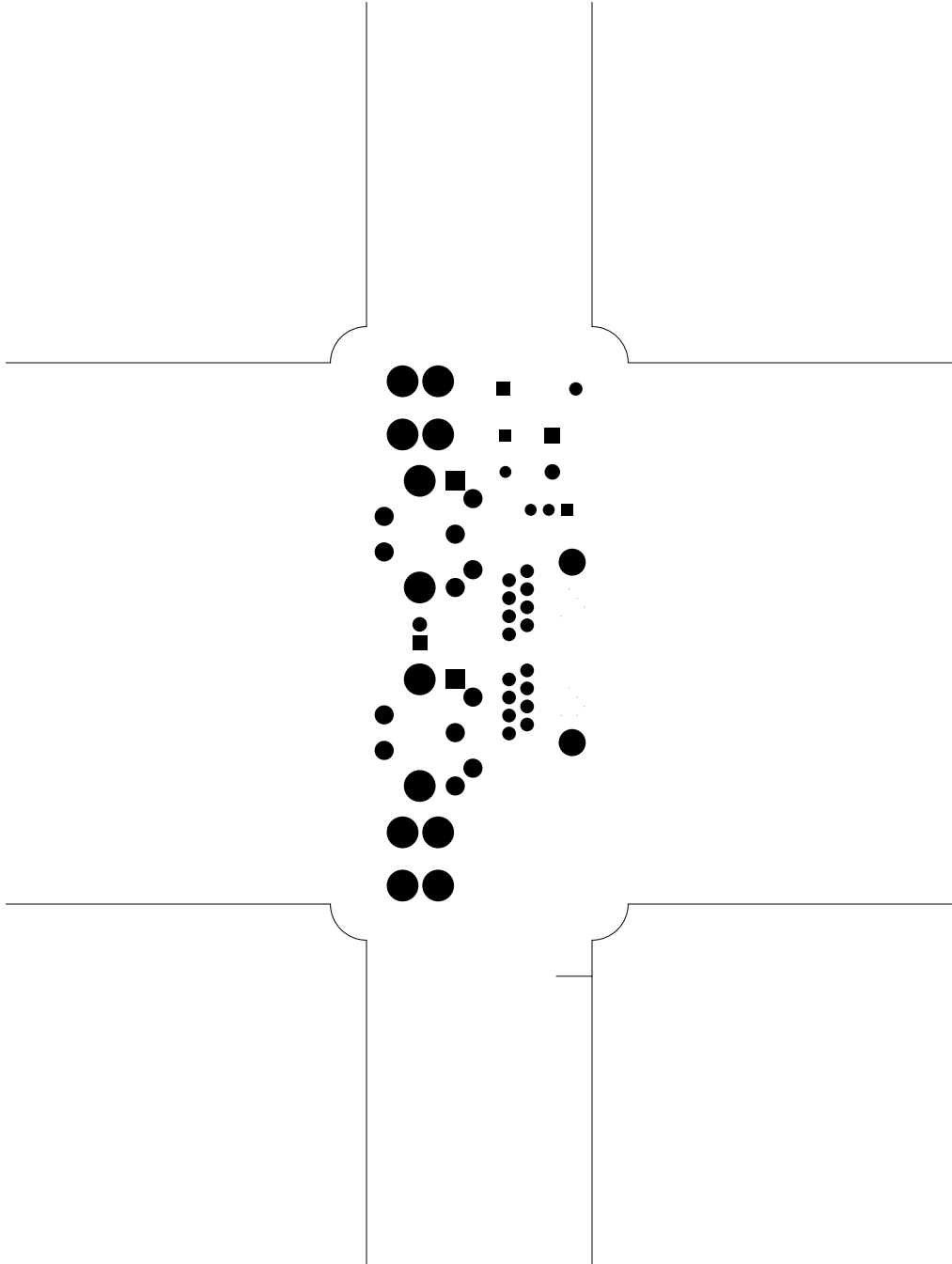


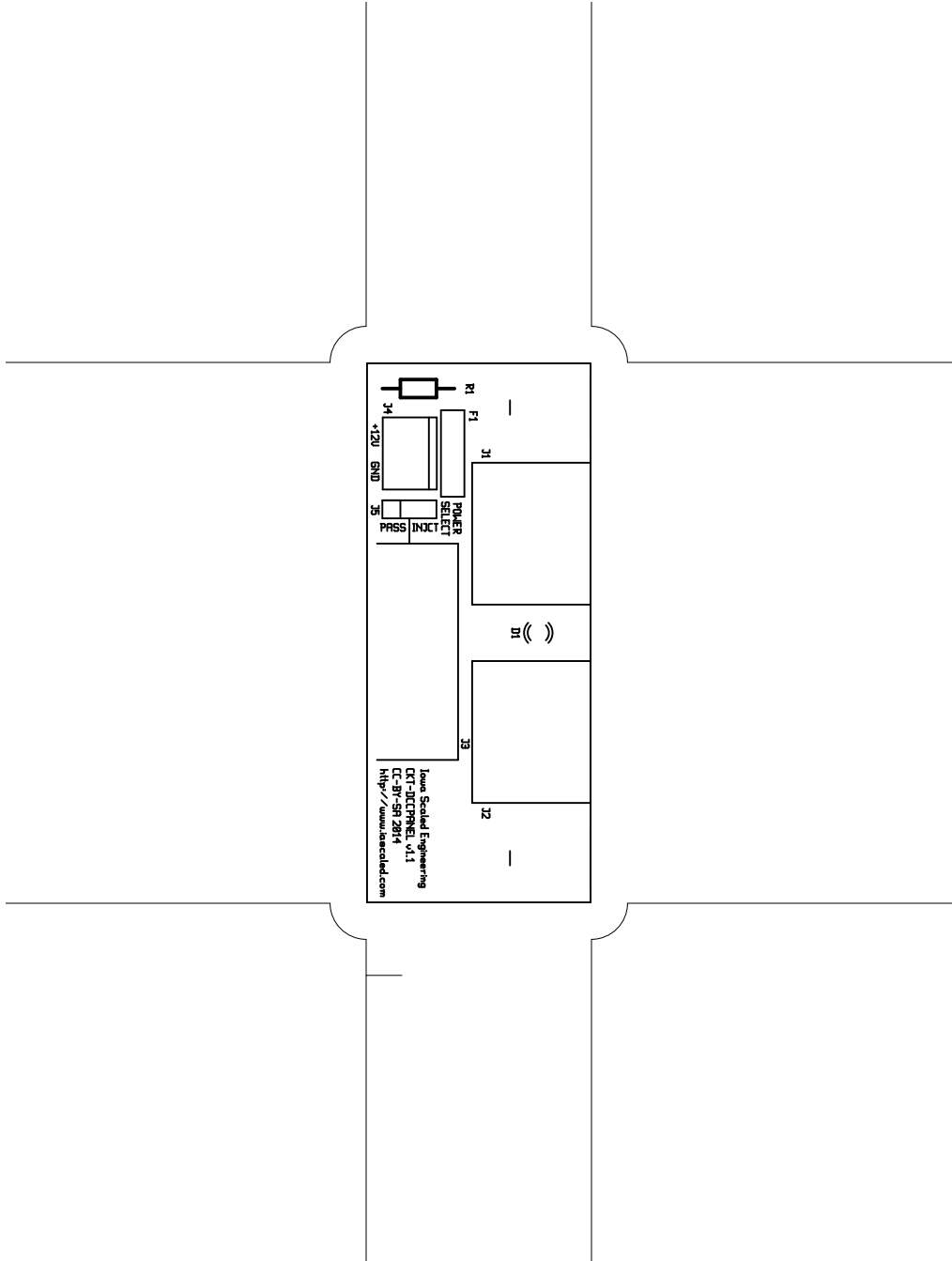




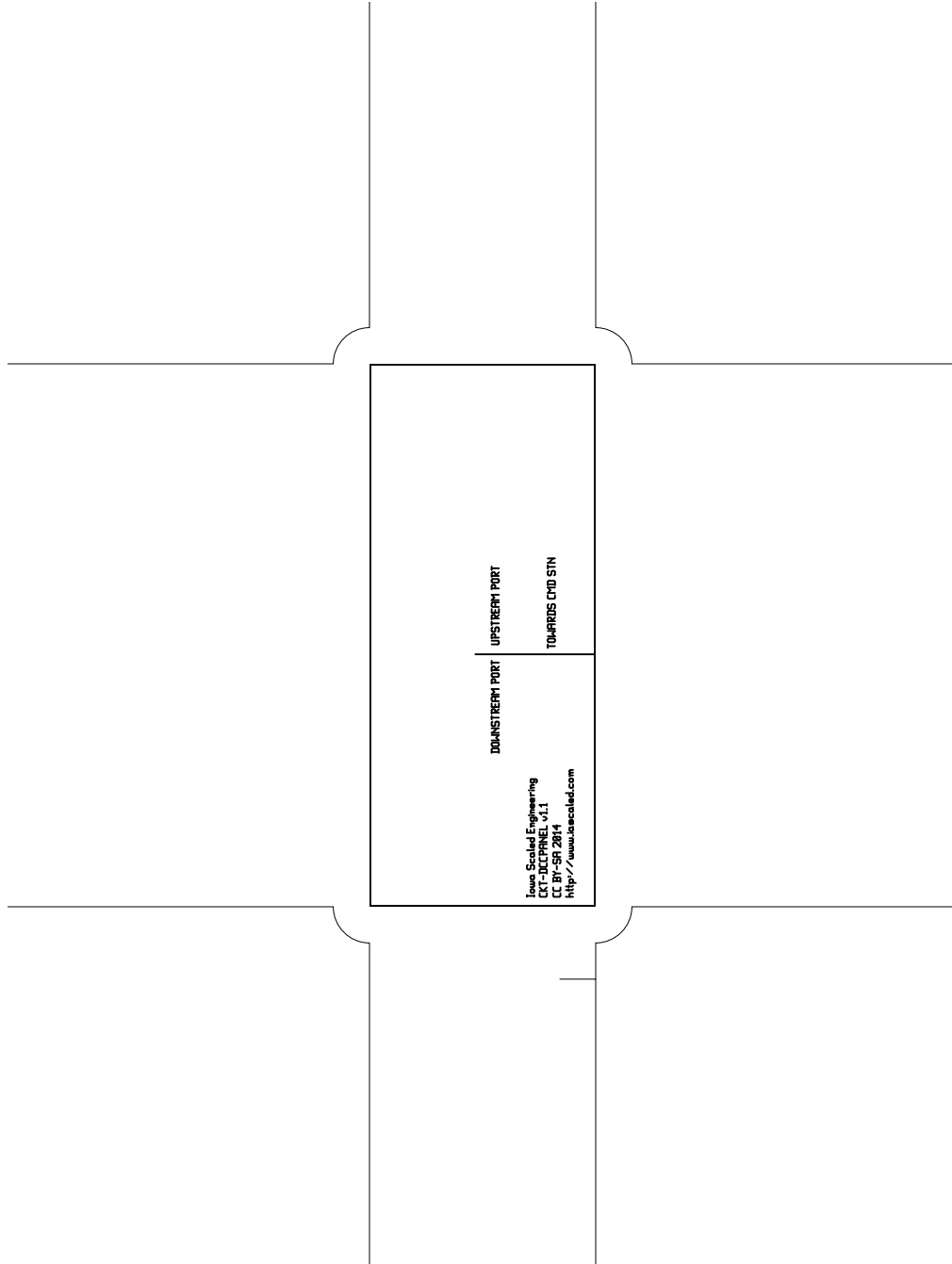




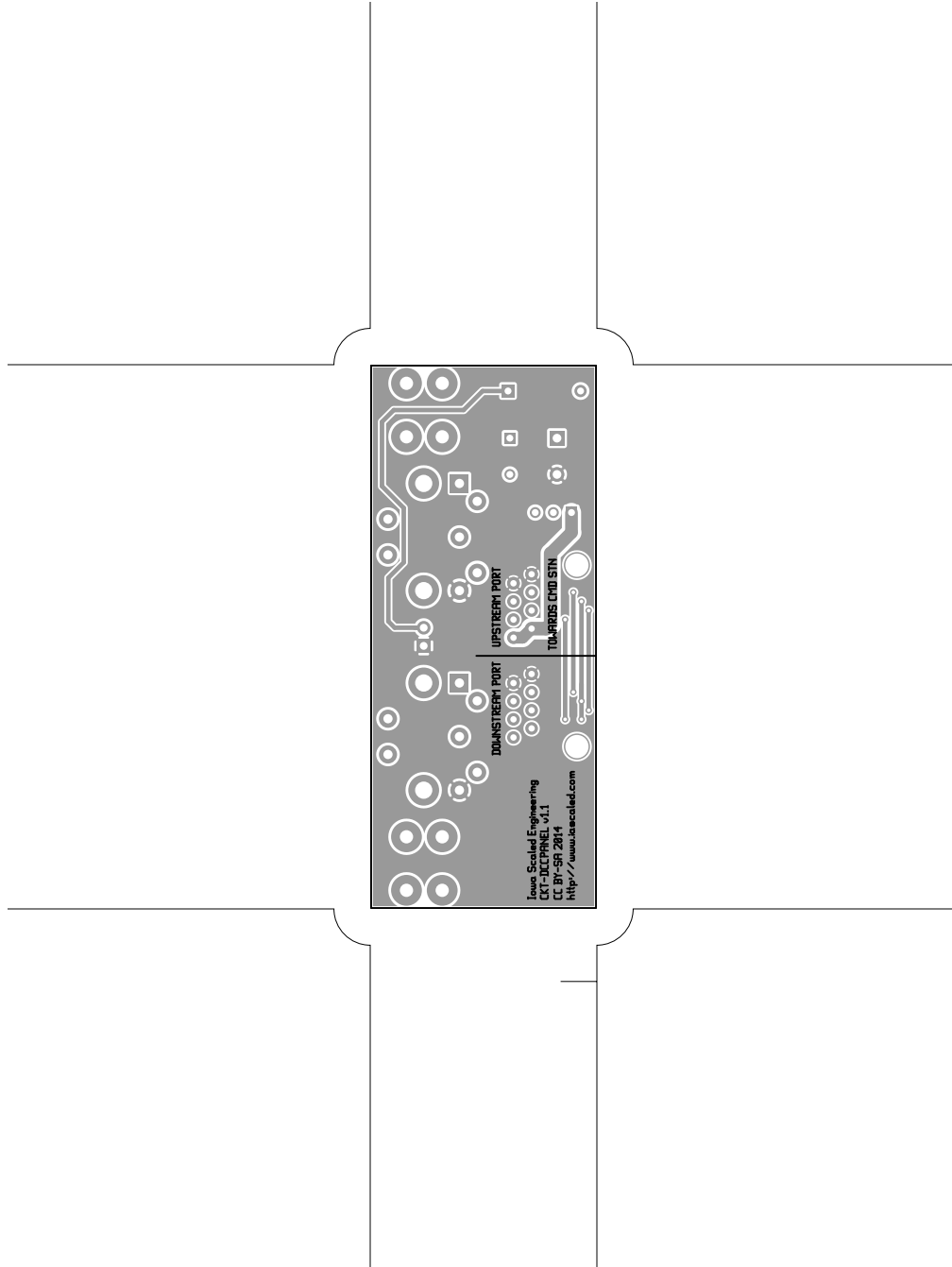










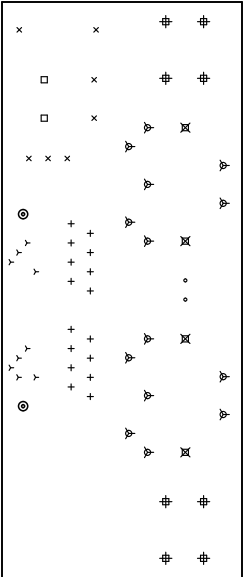


bottomassembly (mirrored), scale = 1:1.000  
ckt-dccpanel.pcb

There are 9 different drill sizes used in this layout, 64 holes total

Symbol	Diam. (Inch)	Count	Plated?
y	0.020	9	YES
+	0.035	16	YES
x	0.038	7	YES
o	0.043	2	YES
□	0.048	2	YES
▽	0.051	14	YES
#	0.073	8	YES
⌘	0.095	4	YES
⊙	0.128	2	YES

Title: (unknown) - Fabrication Drawing  
Author: Nathan D. Holmes  
Date: Thu 13 Nov 2014 03:16:09 AM GMT UTC



Board outline is the centerline of this path